

### > ENTERPRISE MOBILITY MANAGEMENT PLATFORM



#### Benefits

##### Provides Device Choice

- Provides security and management support for iPhone, Windows Mobile, Symbian and Palm smartphones
- Enables the use of personal smartphones for enterprise applications

##### Reduces Risk

- Protects sensitive corporate data on smartphones with policy-based security functionality
- Monitors and prevents unauthorized mobile devices from accessing the corporate network
- Enables regulatory compliance and IT audits

##### Lowers TCO

- Manage and control any smartphone over-the-air from a centralized console
- Automates smartphone lifecycle management, including user self-service functions
- Leverages existing IT infrastructure, resources and tools with Web Services interfaces
- Simplifies user support with Help Desk reports and real-time view of the device

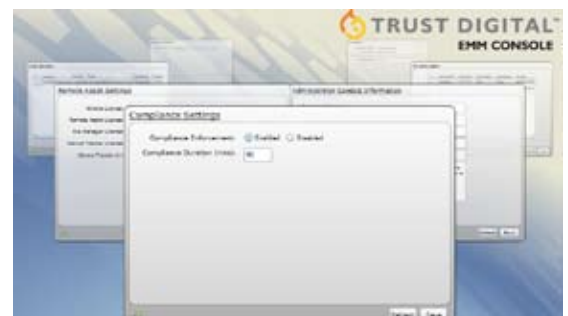
Trust Digital is an award-winning provider of industry leading enterprise mobility management (EMM) platform. Enterprise mobility management is key to an organization's mobility strategy particularly with smartphone capabilities delivering advanced PC-like computing performance to users. With support for popular smartphones such as the Apple iPhone™, Trust Digital provides a complete EMM platform that embraces smartphone diversity for meeting the specialized needs of users without sacrificing security and control.

The Trust Digital EMM platform helps enterprise IT control smartphone costs while also protecting corporate information. Trust Digital's centralized management eliminates operational expense by simplifying how IT administrators and help desk specialists implement policies, assist users and enforce compliance for mobile applications across the enterprise. In addition, its unique software-overlay architecture avoids datacenter expense by easily integrating with existing directory services, database resources and VPN infrastructure.

Trust Digital's EMM platform minimizes corporate and personal liability risks with end-to-end security. The Trust Digital EMM Device Agent provides data protection, endpoint security, and over-the-air management while delivering the transparency users demand. The EMM platform secures enterprise application servers by blocking unsecure mobile devices from accessing the applications before they enter the corporate network while also reporting on compliance status. The Trust Digital EMM Console controls all of this reporting from a centralized location. Designed with the IT security administrator in mind, this web-based console enables simple and quick implementation of security policies that are enforced by the EMM Device Agents and the EMM Audit & Compliance Service.

#### Making Enterprise Mobility Management Easy

Trust Digital's easy-to-use, web-based console centralizes management and provides visibility into various mobile assets in the enterprise, while the Trust Digital EMM Device Agent enforces transparent on-device security and controls access to the corporate network.



The Trust Digital EMM platform ensures the success of your enterprise deployment by focusing on lifecycle tasks that include:

- Manage** — track and manage the lifecycle of any smartphone
- Provision** — deploy and decommission any smartphone
- Secure** — transparently secure smartphones, their corporate data, and the IT network they access
- Support** — minimize IT support costs and maximize user productivity
- Audit** — support enterprise IT and policy compliance reporting requirements

Only Trust Digital provides the security, management, and control you need—and the transparency your users demand.

### Feature Overview

#### EMM Console

- Web-based UI for admin and help desk tasks
- Role-based access for network admin and help desk personnel; AD login integration
- Help desk for decommissioning, remote unlock, and remote wipe
- Reports about device inventory, audit logs, etc.
- Software Package Distribution (SPD) facility enables OTA delivery of software to smartphones targeted by carrier, user, user group, mobile OS, device model, device ID, phone number or other criteria
- Optional Tool: Remote Smartphone Assist delivers a real-time view of what the mobile end-user sees, including stylus and keyboard input

#### EMM Device Management Gateway

- Enables OTA provisioning for users and reduces IT work load
- Allows real-time device access and provides asset information
- Reports smartphone information including: audit logs, pending actions, and device health

#### EMM Audit & Compliance Service

- Visualize mobile assets
- Identify and block rogue devices before they enter the corporate network
- Silent OTA remediation
- Reporting of device compliance status and EAS sync activity

#### EMM Self-Service Portal

- Manages user-initiated requests while allowing users to perform basic help desk services such as enterprise device activation, unlocking their device, device wipe and data recovery
- Secure user access from any web browser using corporate credentials

#### EMM Device Agents

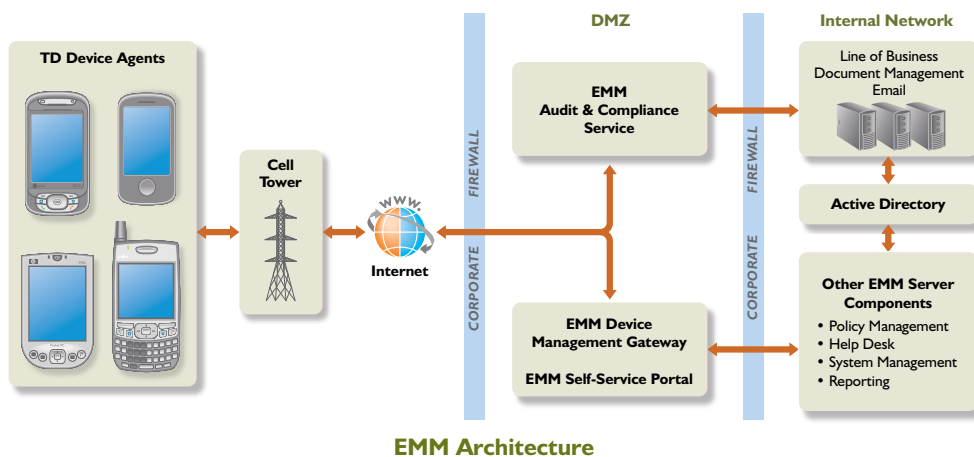
- Passwords authentication and performs remote wipe function
- Transparent on-the-fly FIPS 140-2 encryption designed to minimize intrusiveness to user, reduce application and device latency, and optimize battery life
- Access to encrypted data by patent-pending "Trusted Applications" that controls information flow and prevents data leakage
- Share and recover secured data from SD cards for compliance
- Block resources/apps like WiFi, Blue-tooth, IR, Camera, SMS/MMS, etc.
- Control device software image by restricting app installs
- Optional Feature: Smartcard Logon for CAC-enabled users

### Technical Specifications

The following table offers general guidelines for deploying the Trust Digital EMM platform. For specific server configuration and device support, please contact a Trust Digital sales representative:

EMM Platform	Description	Features	Requirements
<b>EMM Server Components</b>	Administrative components used to create and manage policies, users, applications and devices	<ul style="list-style-type: none"> <li>• EMM Console</li> <li>• EMM Audit &amp; Compliance Service</li> <li>• EMM Device Management Gateway</li> <li>• EMM Self-Service Portal</li> <li>• Optional Tool: Remote Smartphone Assist</li> </ul>	<b>SERVER:</b> <ul style="list-style-type: none"> <li>• Windows 2003 SP1 Server with IIS 6.0 (1GB RAM, 1GB free space)</li> <li>• SQL 2005/2000 (10MB initial size of DB plus 1MB/user/year)</li> </ul>
<b>EMM Device Agents</b>	Device components used to enforce policies and manage devices	<b>SECURITY FEATURES:</b> <ul style="list-style-type: none"> <li>• Authentication Controls</li> <li>• Encryption and Data Protection Controls</li> <li>• Application Controls</li> <li>• Resource Controls</li> </ul> <b>MANAGEMENT FEATURES:</b> <ul style="list-style-type: none"> <li>• OTA software and policy distribution</li> <li>• Data Collection and Logging</li> </ul>	<b>SUPPORTED PLATFORMS:</b> <ul style="list-style-type: none"> <li>• iPhone 2.x, 3.0</li> <li>• Palm 5.4</li> <li>• Windows Mobile 5, 6.x</li> </ul>

Trust Digital has developed an award-winning platform that simplifies mobile networking. Our approach blends mobile device management with policy-managed endpoint security, network access control, and compliance reporting features in a seamless system. This platform integrates smartphones and PDAs into enterprise networks with the same level of security protections enjoyed by laptops and desktops.



Trust Digital and the Trust Digital logo trademarks or registered trademarks of Trust Digital, Inc. All other trademarks are the property of their respective holders.